

FEATURES

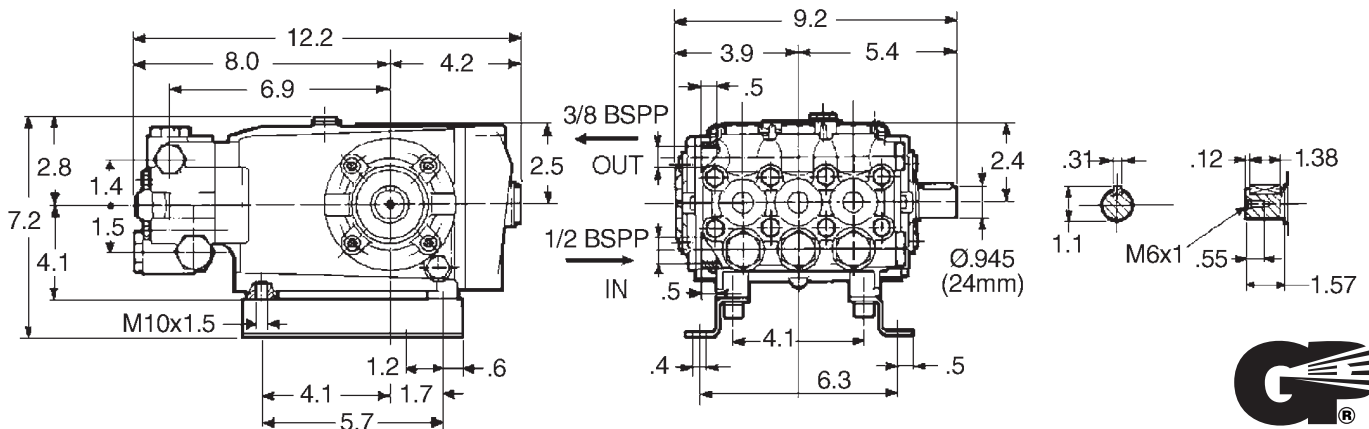
- The preferred pump frame in the car wash self-service industry
- Forged brass manifold with an exclusive lifetime warranty
- Large-capacity, die-cast, anodized aluminum oil-bath crankcase
- Over-sized connecting rods for maximum life
- Heavy-duty tapered roller bearing.
- Solid ceramic plungers with continuously lubricated packings
- Unitized stainless steel inlet and discharge valves
- Available in left-handed “L” version

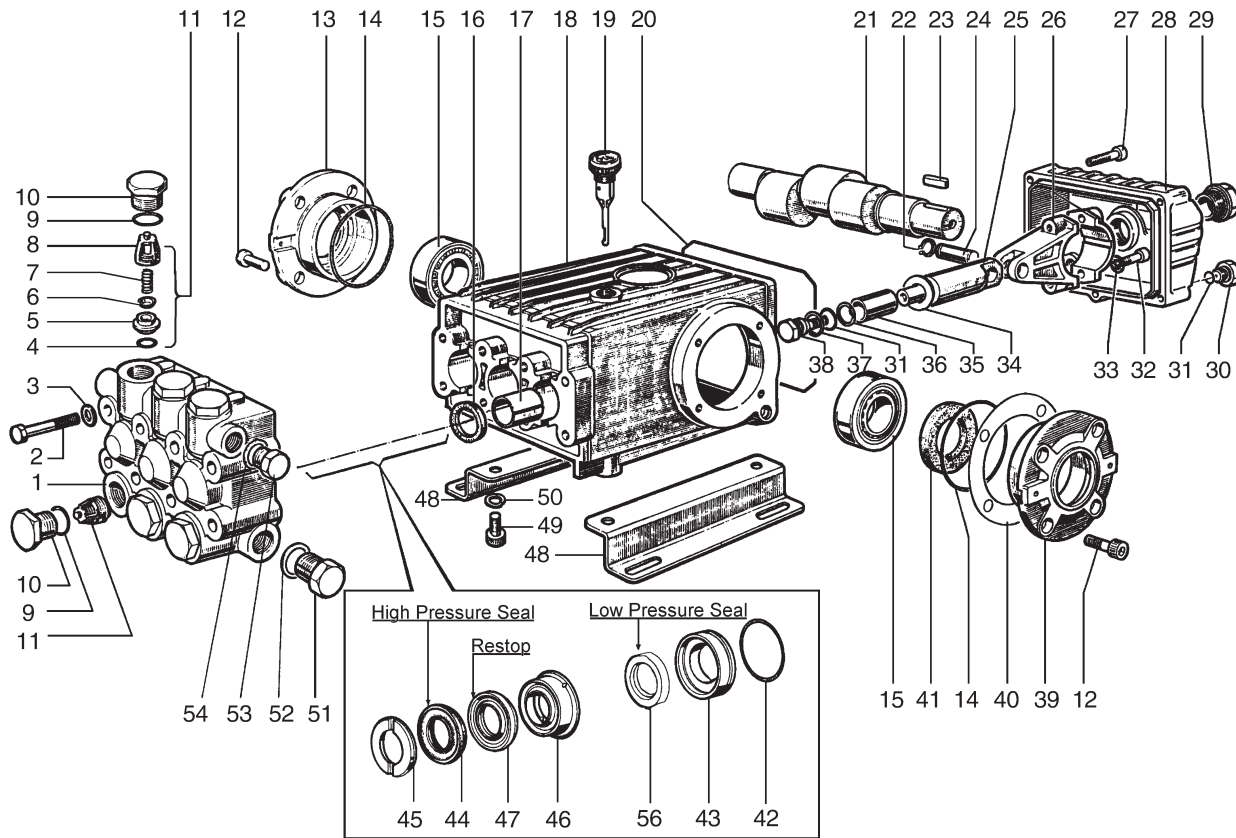


SPECIFICATIONS

| Pump Model | CW3040 |
|-------------------------|----------------------|
| Maximum Volume | 5.0 GPM |
| Max. Discharge Pressure | 3000 PSI |
| Maximum Pump Speed | 1250 RPM |
| Maximum Inlet Pressure | 125 PSI |
| Bore | .787 in. / 20 mm |
| Stroke | .630 in. / 16 mm |
| Crankcase Oil Capacity | 40.6 oz. |
| Maximum Fluid Temp. | 165°F |
| Inlet Port Thread | 1/2-14 BSPP-F |
| Discharge Port Thread | 3/8-19 BSPP-F |
| Shaft Diameter. | .945 in. / 24 mm |
| Weight | 32 lbs. |
| Dimensions | 12.2 x 9.2 x 7.2 in. |

DIMENSIONAL DRAWING





PARTS LIST

| ITEM PART NO. | DESCRIPTION | QTY. | ITEM PART NO. | DESCRIPTION | QTY. | ITEM PART NO. | DESCRIPTION | QTY. |
|---------------|---------------------|------|---------------|---------------------|------|---------------|----------------------------|------|
| 1. 47120841 | Manifold | 1 | 21. 47021735 | Crankshaft | | 41. 90164800 | Seal, Oil | 2 |
| 2. 99320600 | Screw, M8 x 70 | 8 | 22. 90055700 | Ring, Snap, M12 | 6 | 42. 90361600 | O-Ring, 1.364 x .070 | 3 |
| 3. 96702000 | Washer, M8.4 | 8 | 23. 91489000 | Key | 1 | 43. 47080970 | Retainer, Seal, Low Press. | 3 |
| 4. 701115 | O-Ring, .674 x .103 | 6 | 24. 97738000 | Pin, Wrist | 3 | 44. 90270500 | Seal, High Pressure | 3 |
| 5. 36200366 | Seat, Valve | 6 | 25. 47050454 | Guide, Piston | 3 | 45. 47100051 | Ring, Head, M20 | 3 |
| 6. 36200176 | Plate, Valve | 6 | 26. 47030001 | Rod, Connecting | 3 | 46. 47216970 | Ring, Intermed., M20 | 3 |
| 7. 94737600 | Spring | 6 | 27. 99183700 | Screw, M6 x 14 | 5 | 47. 90270400 | Ring, Restop | 3 |
| 8. 36200251 | Guide, Valve | 6 | 28. 47160422 | Cover, Crankcase | | 48. 47200074 | Rail, Pump | 2 |
| 9. 701002 | O-Ring, .797 x .103 | 6 | 29. 97596800 | Oil Indicator | 1 | 49. 99364400 | Screw, M10 x 18 | 4 |
| 10. 98222000 | Cap, M24 | 6 | 30. 98204100 | Cap | 1 | 50. 96710600 | Washer, M10.2 | 4 |
| 11. 36703201 | Valve Assembly | 6 | 31. 701013 | O-Ring, .426 x .070 | 4 | 51. 98217600 | Cap | 1 |
| 12. 99303900 | Screw, M8 x 16 | 8 | 32. 99309900 | Screw, M8 x 35 | 6 | 52. 96751400 | Washer, M21.5 | 1 |
| 13. 47150122 | Cover, Crankcase | 1 | 33. 96701400 | Washer, M8.4 | 6 | 53. 98210000 | Cap | 1 |
| 14. 90391300 | O-Ring, 2.68 x .103 | 2 | 34. 96728600 | Washer, M14 | 3 | 54. 96738000 | Washer, M17.5 | 1 |
| 15. 91837500 | Bearing, Roller | 2 | 35. 47040409 | Plunger, (20 mm) | 3 | 56. 90269400 | Seal, Low Pressure | 3 |
| 16. 90162500 | Seal, Oil | 3 | 36. 660067 | Ring, Back-up | 3 | | | |
| 17. 90912600 | Bushing | 3 | 37. 96728000 | Washer, M14 | 3 | | | |
| 18. 47010422 | Crankcase | 1 | 38. 47219566 | Screw, Plunger | 3 | | | |
| 19. 98210600 | Oil Dip Stick | 1 | 39. 47150022 | Cover, Crankcase | 2 | | | |
| 20. 47211984 | Cover, Gasket | 1 | 40. 97567800 | Shim | 2 | | | |
| | | | | | | Optional | | |
| | | | | | | 190160 | Rail & Coupler Kit (310) | 1 |
| | | | | | | 190161 | Rail & Coupler Kit (530) | 1 |

REPAIR KITS

| KIT NO. | K01 | K02 | K03 | K04 | K06 | K07 | K71 | K969 | K9101A | K910 |
|--------------------------------------|-----|-----|-----|-------|--------------------|-----|--------|------------|----------------------------|------------|
| ITEM NO.s INCLUDED IN KIT | 11 | 16 | 41 | 9, 10 | 31, 34, 36, 37, 38 | 45 | 46, 47 | 44, 47, 56 | 42, 43, 44, 45, 46, 47, 56 | 42, 43, 56 |
| NUMBER OF ASSEMBLIES IN KIT | 6 | 3 | 2 | 6 | 3 | 6 | 3 | 3 | 1 | 3 |
| NUMBER OF CYLINDERS KIT WILL SERVICE | 6 | 3 | - | 3 | 3 | 3 | 3 | 3 | 1 | 3 |

TORQUE SPECS*

| Position | Ft.-lbs. |
|----------|----------|
| 2 | 22.1 |
| 10 | 73.7 |
| 12 | 14.7 |
| 27 | 7.3 |
| 29 | 13.2 |
| 30 | 14.7 |
| 32 | 14.7 |
| 38 | 14.7 |
| 49 | 29.4 |
| 51 | 29.4 |

*Decrease torque by 20% if threads are lubricated.