

# Plunger Pumps

## FEATURING

**MANIFOLD:** High strength forged brass or nickel plated for long term use.

**BOLTS:** Eight 8mm grade 8.8.

**PLUNGERS:** A special thick solid ceramic for long life, strong durability and more resilience.

**CRANKCASE:** Precision die-cast, large cooling fins and anodized for maximum heat dissipation. Sight glass, fill and side and bottom drain plugs.

**BEARINGS:** Oversized tapered roller bearing for maximum life and load distribution.

**BEARINGS SUPPORTS:** Precision die-cast and machined to assure concentricity and alignment.

**VALVES, SEATS, AND SPRINGS:** Stainless steel with specially designed Ultra Form cages to provide long life and positive seating.

**SEALS AND V-PACKINGS:** Continuously lubricating for extended life.

**PLUNGER RODS:** Stainless steel construction for strength, no plating to scrape off, back-up and o-ring plunger sealing system.

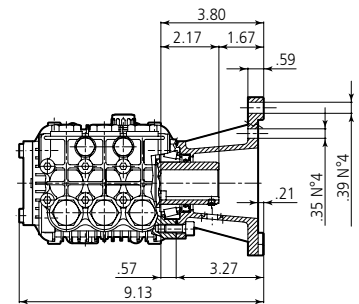
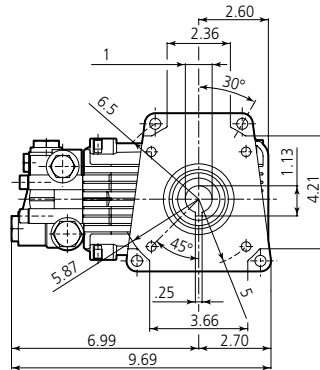
**CONNECTING RODS:** One piece special alloy aluminum or bronze for higher pressure, oversized for maximum strength, load disbursement, and long life. Heavy pin area construction, for added load strength.

## DIMENSIONS



RKV

D version + F24  
Hollow shaft pump  $\varnothing$  1"



## SPECIFICATIONS

MODEL	MAX GPM	MAX LMP	MAX PSI	MAX BAR	POWER EBHP	BORE DIA MM	STROKE MM	CRANKSHAFT ID STAMP	WEIGHT LBS.
RKV3.5G30AD-F24	3.5	13.2	3000	205	7.5	18	6.2	9	21
RKV3.5G35D-F24	3.5	13.2	3500	240	8.4	18	6.2	9	21
RKV3.5G40HD-F24	3.5	13.2	4000	275	10.0	18	6.2	9	21
RKV4G30AD-F24	4.0	15.1	3000	205	7.5	18	7.0	8	21
RKV4G32D-F24	4.0	15.1	3200	220	7.5	18	7.0	8	21
RKV4G35HD-F24	4.0	15.1	3500	240	7.5	18	7.0	8	21
RKV4G40HD-F24	4.0	15.1	4000	275	11.0	18	7.0	8	21
RKV4.5G22D-F24	4.5	17.0	2200	150	12.0	18	8.0	7	21
RKV4.5G40HD-F24	4.5	17.0	4000	275	12.0	18	8.0	7	21
RKV5G40HD-F24	5.0	18.3	4000	275	13.7	18	8.6	11	21
RKV5.5G40HD-F24	5.5	20.8	4000	275	15.0	18	9.8	6	21

Oil Capacity = 15.3 oz

Maximum Fluid Temperature = 140° F

Inlet Thread = 1/2" F

Discharge Thread = 3/8" F

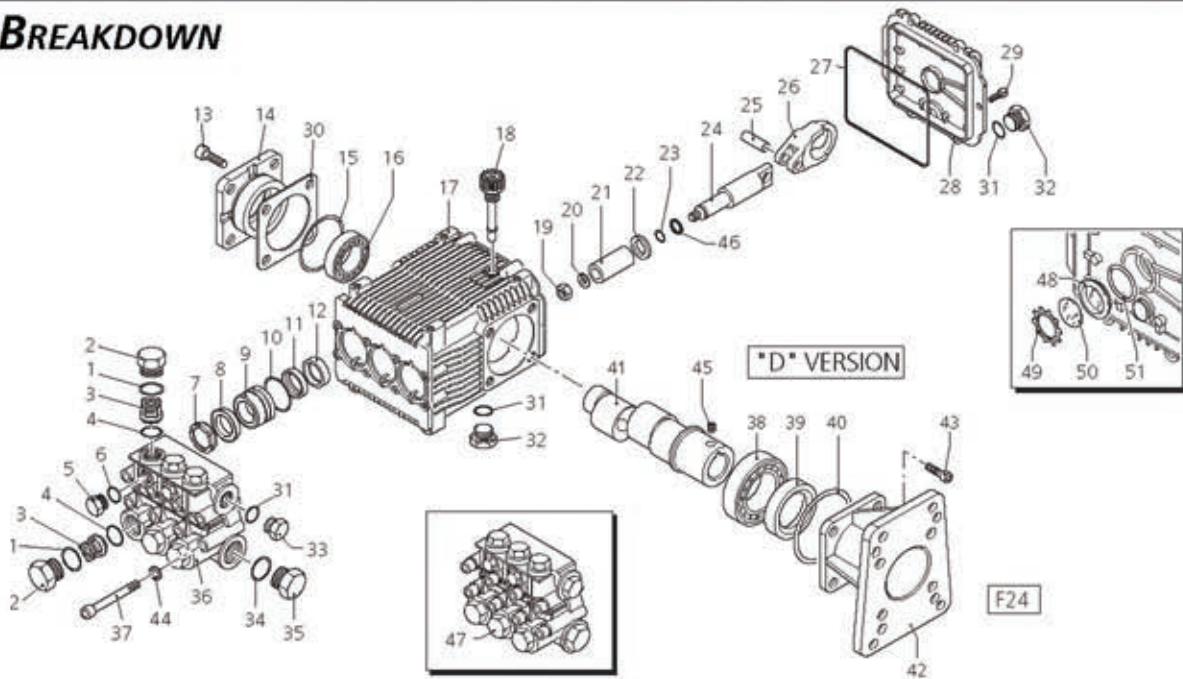
### Torque Specifications Inch pounds (ft. lbs)

HEAD	PISTON NUT	REAR COVER	SIDE COVER	VALVE CAP	CON RODS
217 (18)	106 (8.8)	89 (7.5)	217 (18)	478 (40)	N/A

**SPECIAL NOTE:** Use AR64516 Oil. First change oil after 50 hours of use. Then every 500 hours. This oil is specially formulated to provide correct lubrication properties for our pumps. **No** other oil is factory approved for these pumps.



**PARTS BREAKDOWN**



Pos.	Code	Description	Qty.	Pos.	Code	Description	Qty.
1	960160	O-Ring	6	34	180101	O-Ring	1
2	960090	Plug	6	35	820361	Plug 1/2" G	1
3	960850	Plug	6	36	960870	Plug 1/2" G Nickel	1
4	1380740	Plug	6	37	1381071	Pump head	1
5	889052	Complete valve	6	38	1381070	Pump head	1
6	1389051	Complete valve	6	39	820150	Screw	8
7	880830	O-Ring	6	40	1380320	Bearing	1
8	880581	Plug 1/4" G	2	41	621170	Seal	1
9	1380690	Plug 1/4" G Nickel	2	42	1380220	O-Ring	1
10	820510	O-Ring	2	43	2280140	Hollow shaft	1
11	960110	Support ring	3	44	2280130	Hollow shaft	1
12	880320	Gasket	3	45	2280590	Hollow shaft	1
13	1380090	Piston guide	3	46	2280600	Hollow shaft	1
14	961240	O-Ring	3	47	1380550	Gas engine flange	1
15	880330	Gasket	3	48	180030	Screw	4
16	1383130	Seal	3	49	1381850	Washer	8
17	850370	Screw	4	50	820440	Grub screw	1
18	1380050	Bearing support	1	51	1080401	Ring	3
19	640030	O-Ring	1		1389232	Pump head assembly	1
20	2280240	Bearing	1		1389236	Pump head assembly	1
21	1382770	Pump housing	1		1389228	Pump head assembly	1
22	880130	Oil cap	3		1389224	Pump head assembly	1
23	962010	Nut	3	48	1260250	Oil indicator	1
24	962000	Washer	3	49	1260430	Snap ring	1
25	1380940	Ceramic piston	3	50	1780690	Disc	1
26	1380950	Spacer	3	51	1140450	O-Ring	1
27	600180	O-Ring	3				
28	1380920	Guiding piston	3				
29	1380060	Piston pin	3				
30	1383050	Aluminum con rod	3				
31	1383020	Bronze con rod	3				
32	1780510	O-Ring	1				
33	1789010	Complete cover	1				
34	1343510	Screw	6				
35	1380120	0,10 mm shim	1-3				
	1380130	0,20 mm shim	1-3				
	1380530	0,25 mm shim	1-3				
	1382810	0,05 mm shim	1-3				
	740290	O-Ring	3				
	1980740	Plug 3/8" G	2				
	1980740	Plug 3/8" G	1				
	1981180	Plug 3/8" G Nickel	1				

**Legend**

Ø 18 For ○	Ø 18 For □	Ø 18 For ▼	Ø 18 For ◆
RKV3.5G25	RKV4G30A RKV4G30	RKV4.5G40H	RKV5.5G40H
For ●	For ■	For ▲	For ★
RKV3.5G30H	RKV4G32	RKV3.5G35H RKV3.5G40H	RKV4G35H RKV4G40H

**Repair Kits**

Water Seal Kit 1857		Valve Kit 1828		Pistons Kit 2546		Oil Seals Kit 1856	
Pos.	Qty.	Pos.	Qty.	Pos.	Qty.	Pos.	Qty.
8	3	3	6	19	3	12	3
10	3	4	6	20	3	15	1
11	3			21	3	27	1
				22	3	39	1
				23	3	40	1
				46	3		
Support Rings Kit 1829							
Pos.	Qty.						
7	3						

**Special Parts**

Code	Description	Qty.
2819	Kit for up to 180° F Ø18 High Temp	1
2809	Viton water seals Ø18	1

Water Cannon, Inc.  
4044 West Lake Mary Blvd  
Units 140-424  
Lake Mary, FL 32746  
1-800-454-9274

www.watercannon.com  
www.gxparts.com  
www.hydromidwest.com  
www.hotsuperskid.com  
sales@watercannon.com