

## FEATURES

### Superior Design

- Triplex plunger design delivers smoother liquid flow.
- Hi-Pressure Seals are completely lubricated and cooled by the liquid being pumped.
- Inlet and discharge valve assemblies interchange for easier maintenance.
- Lubricated Lo-Pressure Seal provides double protection against external leakage.
- Oil bath crankcase assures optimum lubrication.
- Close tolerance concentricity of the ceramic plunger maximizes seal life.

### Quality Materials

- Precision design 304 stainless steel valves and seats are hardened and polished for ultimate seating and extended valve life.
- Forged brass manifolds for strength and corrosion resistance.
- Special concentric, high-density, polished, solid ceramic plungers provide a true wear surface and extended seal life.
- Specially formulated, CAT PUMP exclusive, Hi-Pressure Seals offer unmatched performance and seal life.
- Die cast aluminum crankcase provides high strength, minimum weight and precision tolerance control.
- Chrome-moly crankshaft gives unmatched strength and surface hardness.
- Oversized crankshaft bearings with greater capacity mean longer bearing life.

### Easy Maintenance

- Wet-end is easily serviced without entering crankcase, requiring less time and effort.
- Valve assemblies are accessible without disturbing piping, for quick service.
- Preset packings mean no packing gland adjustment is necessary, reducing maintenance costs.

### ⚠ WARNING

All systems require both a primary pressure regulating device (i.e., regulator, unloader) and a secondary pressure safety relief device (i.e., pop-off valve, safety valve). Failure to install such relief devices could result in personal injury or damage to the pump or to system components. CAT PUMPS does not assume any liability or responsibility for the operation of a customer's high pressure system.

## 3CP Plunger Pump

### Models

**3CP1120**  
**3CP1130**  
**3CP1140**

### SPECIFICATIONS

U.S. Measure

Metric Measure

#### MODEL 3CP1120

Flow .....4.2 GPM (16 L/M)  
Pressure Range .....100 to 2200 PSI (7 to 155 BAR)  
RPM .....1725 RPM (1725 RPM)  
Stroke .....0.500" (12.7 mm)

#### MODEL 3CP1120G — GEARBOX

Flow .....3.5 GPM (13.2 L/M)  
Pressure Range .....100 to 2200 PSI (7 to 155 BAR)  
RPM .....3600 RPM (3600 RPM)  
Stroke .....0.512" (12.7 mm)

#### MODEL 3CP1130

Flow .....2.4 GPM (9 L/M)  
Pressure Range .....100 to 2200 PSI (7 to 155 BAR)  
RPM .....1725 RPM (1725 RPM)  
Stroke .....0.276" (7 mm)

#### MODEL 3CP1140

Flow .....3.6 GPM (13.6 L/M)  
Pressure Range .....100 to 2200 PSI (7 to 155 BAR)  
RPM .....1725 RPM (1725 RPM)  
Stroke .....0.433" (11 mm)

### COMMON SPECIFICATIONS

Inlet Pressure Range .....Flooded to 70 PSI (Flooded to 4.9 BAR)  
Bore .....0.709" (18 mm)  
Crankcase Capacity .....11.8 oz. (0.35 L)  
Maximum Liquid Temperature .....160°F (71°C)  
Above 130°F call CAT PUMPS for inlet conditions and elastomer recommendations.  
Inlet Ports (2) .....1/2" NPTF (1/2" NPTF)  
Discharge Ports (2) .....3/8" NPTF (3/8" NPTF)  
Pulley Mounting.....Either Side (Either Side)  
Shaft Diameter.....0.650" (16.5 mm)  
Weight .....14.84 lbs. (6.7 kg)  
Dimensions.....9.1 x 8.77 x 5.47" (231 x 223 x 139 mm)

### ELECTRIC HORSEPOWER REQUIREMENTS

MODEL	FLOW		PRESSURE				MOTOR PULLEY SIZE	
			PSI 1200	PSI 1500	PSI 2000	PSI 2200	Using 1750 RPM Motor 5.0" Pump Pulley O.D.	
	U.S. GPM	L/M	BAR 85	BAR 105	BAR 140	BAR 155	RPM	Pulley O.D.
3CP1120	4.2	16	3.5	4.3	5.8	6.3	1725	5.0
	3.5	13.2	2.9	3.6	4.8	5.3	1531	4.4
	3.0	11.4	2.5	3.1	4.2	4.5	1313	3.8
3CP1130	2.4	9	1.9	2.4	3.2	3.6	1725	Direct Drive
3CP1140	3.6	13.6	3.0	3.7	5.0	5.4	1725	Direct Drive
3CP1120G	3.5	13.2	2.9	3.6	4.8	5.3	1420	Gearbox

**DETERMINING  
THE PUMP R.P.M.**

Rated G.P.M.  
Rated R.P.M.

= "Desired" G.P.M.  
"Desired" R.P.M.

**DETERMINING  
THE REQUIRED H.P.**

GPM x PSI  
1460

= Electric Brake  
H. P. Required

**DETERMINING  
MOTOR PULLEY SIZE**

Motor Pulley O.D.  
Pump R.P.M.

= Pump Pulley O.D.  
Motor R.P.M.

See complete Drive Packages [Incls: Pulleys, Belts, Hubs, Key] Tech Bulletin 003.  
Refer to pump **Service Manual** for repair procedure, additional technical information and **pump warranty**.

*"Customer confidence is our greatest asset"*

# PARTS LIST

ITEM	P/N	MATL	DESCRIPTION	QTY
2	30047	STL	Key (M5x5x24)	1
5	92519	STZP	Screw, HHC Sems (M6x16)	8
8	46901	AL	Cover, Bearing	2
	<b>48259</b>	<b>AL</b>	Cover, Blind - 3CP1120G	1
10	14028	NBR	O-Ring, Bearing Cover - 70D	2
11	43222	NBR	Seal, Oil, Crankshaft	1/2
15	14480	STL	Bearing, Ball	2
20	48730	TNM	Rod, Connecting, Assembly [5/01]	3
25	<b>46927</b>	<b>FCM</b>	Crankshaft, Dual End - 3CP1120 (M12.7)	1
	<b>46994</b>	<b>FCM</b>	Crankshaft, Dual End - 3CP1130 (M7)	1
	<b>46991</b>	<b>FCM</b>	Crankshaft, Dual End - 3CP1140 (M11)	1
	<b>48257</b>	<b>FCM</b>	Crankshaft, Single End - 3CP1120G (M12.7)	1
32	46798	RTP	Cap, Oil Filler	1
33	14179	NBR	O-Ring, Oil Filler Cap - 70D	1
37	92241	—	Gauge, Oil, Bubble w/Gasket	1
38	44428	NBR	Gasket, Flat, Oil Gauge - 80D	1
40	92519	STZP	Screw, HHC Sems (M6x16)	4
48	25625	STCP	Plug, Drain (1/4"x19BSP)	1
49	23170	NBR	O-Ring, Drain Plug - 70D	1
50	46939	AL	Cover, Rear	1
51	14041	NBR	O-Ring, Rear Cover - 70D	1
53	48644	AL	Crankcase	1
64	46615	CM	Pin, Crosshead	3
65	48459	BBNP	Rod, Plunger	3
70	46839	NBR	Seal, Oil, Crankcase	3
75	43900	S	Slinger, Barrier	3
88	45697	S	Washer, Keyhole	3
90	46976	CC	Plunger (M18x43)	3
98	46730	NBR	Washer, Seal - 90D	3
	<b>48394</b>	<b>FPM</b>	Washer, Seal - 90D	3
99	48201	SSL	Retainer, Plunger w/Stud (M6)	3
100	46541	PVDF	Retainer, Seal	3
106	43243	NBR	Seal, LPS w/S-Spg	3
	<b>44926</b>	<b>FPM</b>	Seal, LPS w/SS-Spg	3
120	46625	BB	Case, Seal	3
121	13976	NBR	O-Ring, Seal Case - 70D	3
	<b>48522</b>	<b>FPM</b>	O-Ring, Seal Case	3
125	43245	SNG	Seal, HPS w/S	3
	<b>44925</b>	<b>FPM</b>	Seal, HPS w/SS	3
	<b>46652</b>	<b>HT</b>	Seal, HPS w/SS	3
139	43448	BB	Plug, Inlet (1/2"NPT)	1
163	17547	NBR	O-Ring, Seat - 85D	6
	<b>11685</b>	<b>FPM</b>	O-Ring, Seat - 85D	6
164	45790	S	Seat	6
166	43723	S	Valve	6
167	43750	S	Spring	6
168	44565	PVDF	Retainer, Spring	6
172	17615	NBR	O-Ring, Valve Plug - 75D	6
	<b>15855</b>	<b>FPM</b>	O-Ring, Valve Plug - 70D	6
174	46756	BB	Plug, Valve	6
185	46616	FBB	Manifold, Head	1
193	87870	STZP	Screw, HSH (M8x65)	8
196	22187	BBCP	Plug, Discharge (3/8"NPT)	1
250	118672	STCP	Protector, Shaft	1
260	30612	STZP	Mount, Rail Assy (Incls: 26246, 30901, 30910, 30920)	1
265	30641	—	Mount, Assy (Incls: 30612, 30032, 30047, 118672)	1
270	30246	STL	Assy, Pulley & Key (Incls: 30032, 30047)	1
			<b>[See Drive Packages, Tech Bulletin 003]</b>	
283	34334		Kit, Oil Drain	1
299	814841	FBB	Head, Complete	1
300	33983	NBR	Kit, Seal (Incls: 98, 106, 121, 125)	1
	33257	FPM	Kit, Seal (Incls: 98, 106, 121, 125)	1
	31983	HT	Kit, Seal (Incls: 98, 106, 121, 125)	1
310	33062	NBR	Kit, Valve (Incls: 163, 164, 166, 167, 168, 172)	2
	33258	FPM	Kit, Valve (Incls: 163, 164, 166, 167, 168, 172)	2
350	30696	STZP	Plier, Reverse	1
500	8075	—	Gearbox (See Individual Data Sheet)	1
—	6107	—	Oil, Bottle (21 oz.) ISO 68 Multi-viscosity Hydraulic (Fill to specified crankcase capacity prior to start-up)	1

**Bold print part numbers are unique to a particular pump model. Italics are optional items. [ ]** Date of latest production change.

See Tech Bulletins 002, 003, 024, 036, 064, 073, 074, 077 and 083 for additional information.

For motorized versions see BD motor data sheet. For Gearbox version see 8075 data sheet.

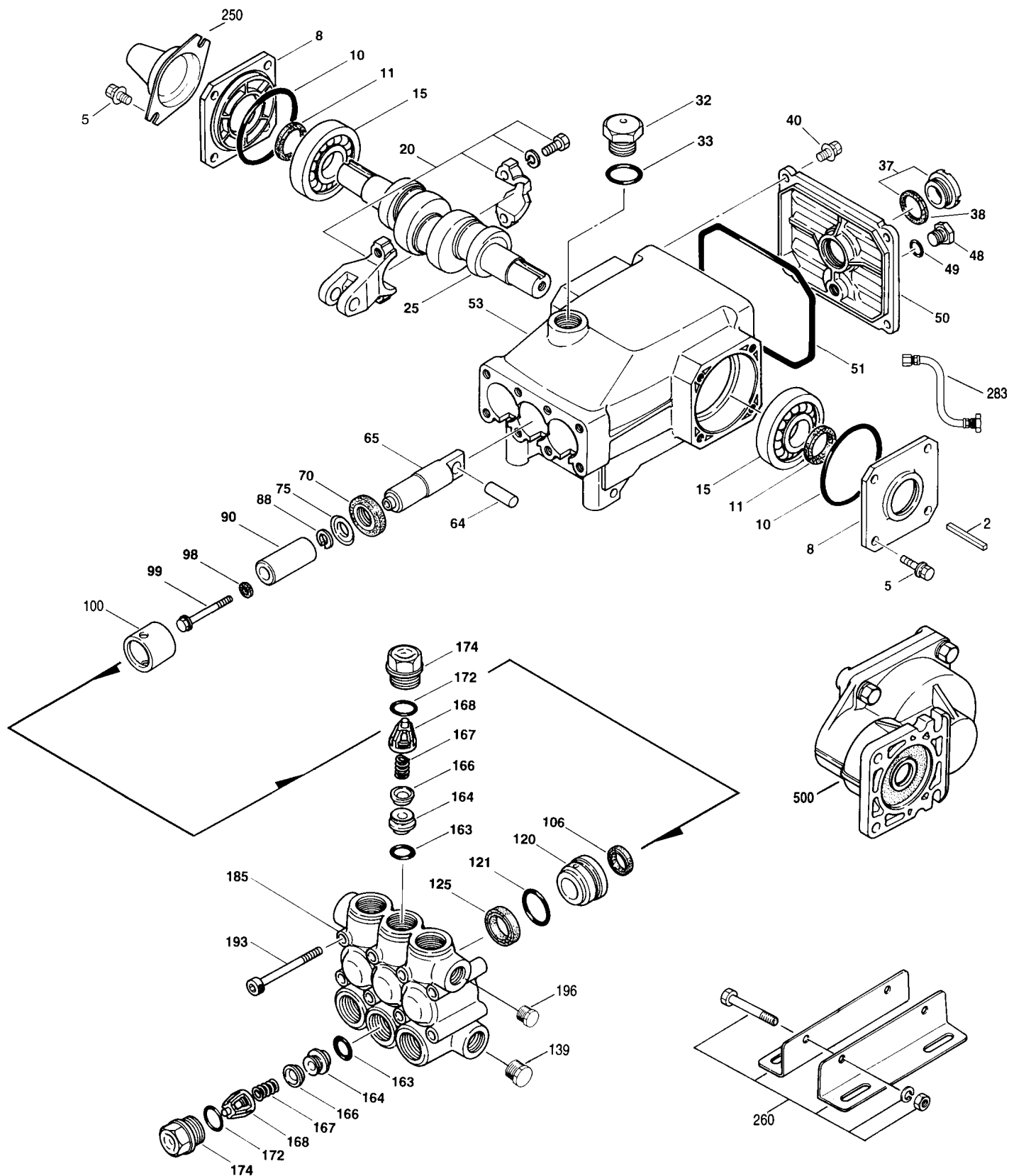
MATERIAL CODES (Not Part of Part Number): AL=Aluminum BB=Brass BBCP=Brass/Chrome Plated BBNP=Brass Nickel Plated CC=Ceramic CM=Chrome-moly

FBB=Forged Brass FCM=Forged Chrome-Moly FPM=Fluorocarbon HT=Hi-Temp (EPDM Alternative)

NBR=Medium Nitrile (Buna-N) PVDF=Fluoroplastic (High Strength) RTP=Reinforced Composite S=304SS SNG=Special Blend (Buna)

SSL=316SS/Low Carbon STL=Steel STCP=Steel/Chrome Plated STZP=Steel/Zinc Plated TNM=Special High Strength

# EXPLODED VIEW



Models  
3CP1120, 3CP1120G,  
3CP1130, 3CP1140  
August 2005

